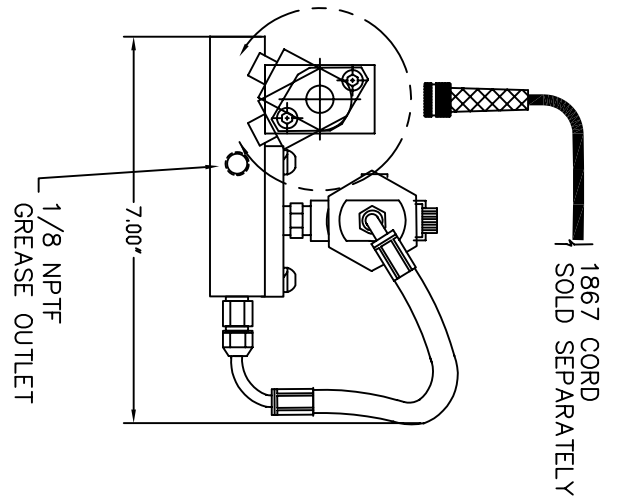
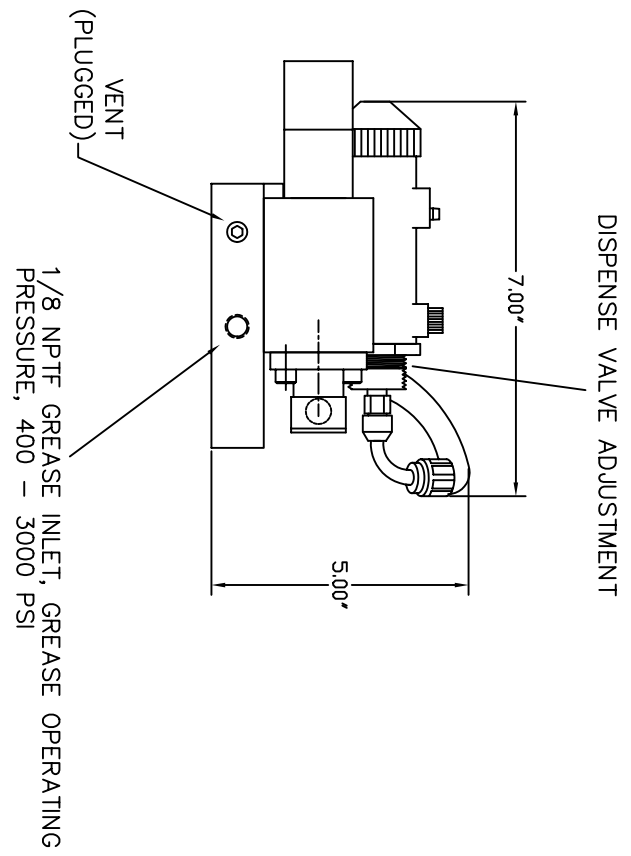


FS3001 FLOW SENSOR

NOTE: FLOW IS SENSED FROM THE INLET OF THE DISPENSE VALVE RESULTING IN TWO FLOW SIGNALS, ONE FROM THE INITIAL DISPENSE, AND ANOTHER FROM THE RESET OR REGENERATION OF GREASE INTO THE VALVE.



DETAILED DESCRIPTION

Grease dispenser with confirmation. Adjustable regenerative grease dispenser requires 20 to 250V AC/DC, 60 to 120 p.s.i. compressed air, and grease pressure at 400 to 3000 p.s.i. Dispenser will dispense .2 to 4 cc per actuation and has snuff back and an FS3001 (AC/DC adjustable) flow sensor. Actuation requires a 3-way N.C. air valve. The flow sensor will recognize the smaller grease input that causes the larger preset grease output. The small amount of grease that inputs the dispenser during reset and regeneration will also be recognized by the flow sensor. The flow sensor output will be ON when there is no flow and OFF during recognized flow. The dispenser and flow sensor will function with NLG#1 to #3 grease and can be adjusted to recognize flow of as little as 0.10 cc per second.

LIBELOGIC G. P. REEVES INC.

SCALE	15764 GREEN V STREET HELLAND, IN 49424 USA	
DATE	TOLERANCES	DRAWN BY
06/18/01	X.XXX = ± 0.003 X.XX = ± 0.015 X.X = ± 1/32	JMH

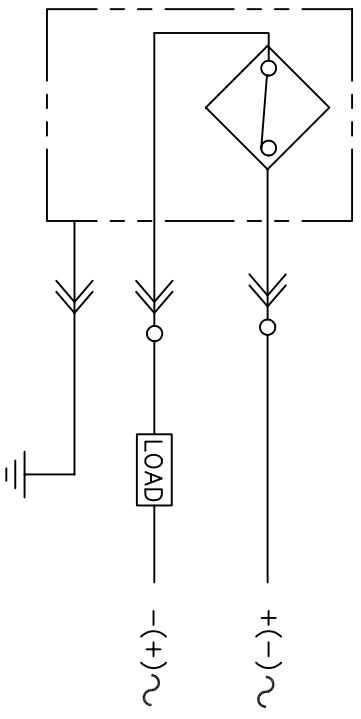
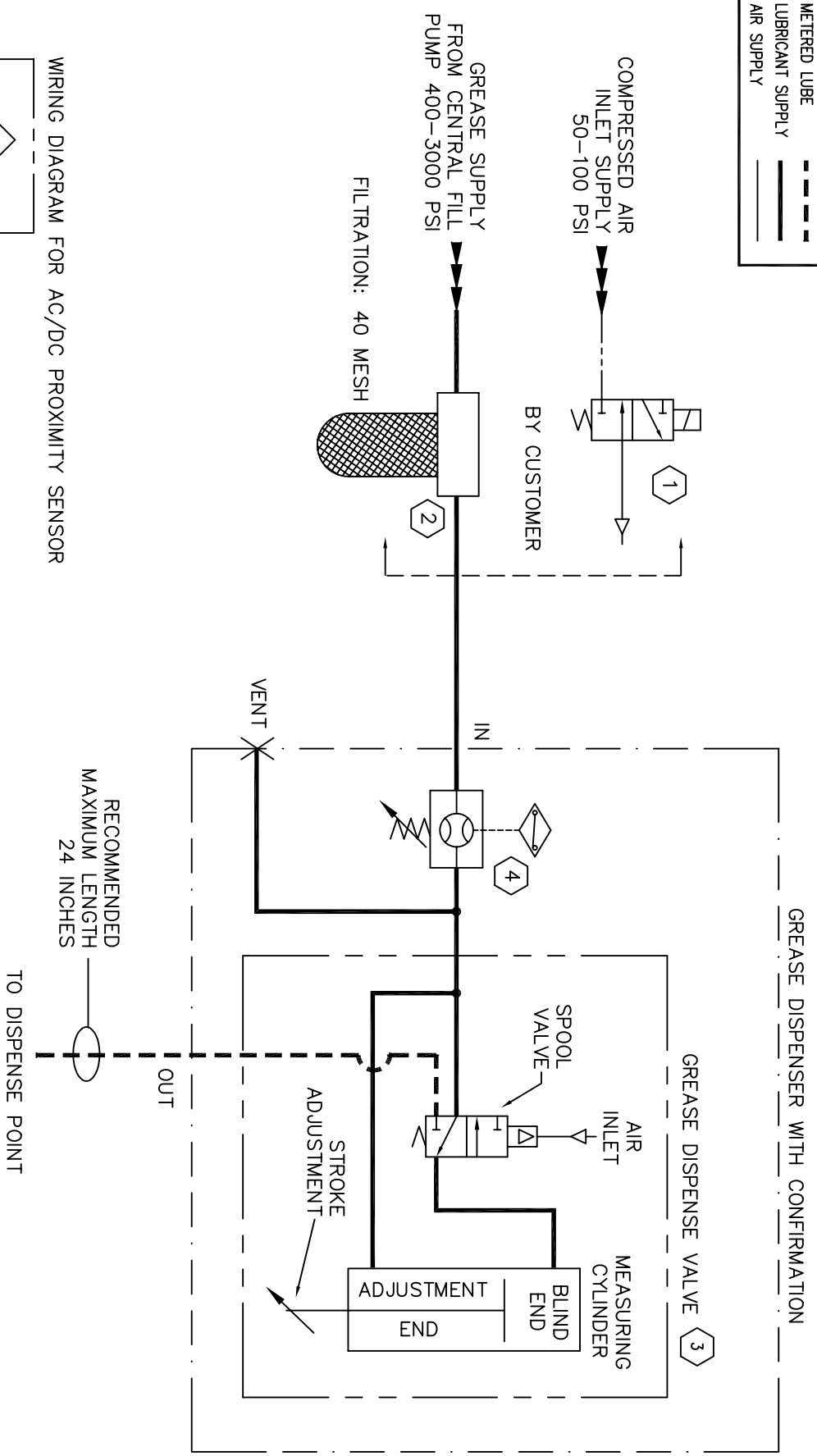
GDC3001 Grease Dispenser
With Confirmation

THIS DOCUMENT IS THE PROPERTY OF G.P. REEVES INC. AND CONTAINS CONFIDENTIAL PROPRIETARY INFORMATION THAT IS NOT TO BE DISCLOSED TO THIRD PARTIES AND IS NOT TO BE USED WITHOUT APPROVAL IN WRITING FROM G.P. REEVES INC.

KEY	A	Revised & Redrawn	JMH	08/22/01
		REVISION	INIT	DATE

SHEET	1 of 3	DRAWING NUMBER	KA4491
-------	--------	----------------	--------

LINE CODE	---
METERED LUBE	----
LUBRICANT SUPPLY	=====
AIR SUPPLY	~~~~~



WIRING DIAGRAM FOR AC/DC PROXIMITY SENSOR

THIS DOCUMENT IS THE PROPERTY OF G.P. REEVES INC. AND CONTAINS CONFIDENTIAL PROPRIETARY INFORMATION THAT IS NOT TO BE DISCLOSED TO THIRD PARTIES AND IS NOT TO BE USED WITHOUT APPROVAL IN WRITING FROM G.P. REEVES INC.

4	FS3001 Flow Sensor	1
3	KA1797 Dispense Valve .2cc-4cc	1
2	By Customer 40 Mesh Filter	1
1	By Customer 3-Way N.C. Valve	1
KEY DESCRIPTION		REQ
LUBE LOGIC G. P. REEVES INC. 13764 GREEN V. STREET HELLAND, IN 49424 USA		
SCALE	TOLERANCES	BY
DATE 06/18/01	X.XXX = ± 0.003 X.XX = ± 0.015 XX = ± 1/32	JMH
Hydraulic/Pneumatic Schematic For GDC3001		
SHEET 2 of 3	DRAWING NUMBER	KA4491