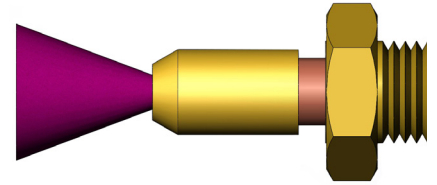
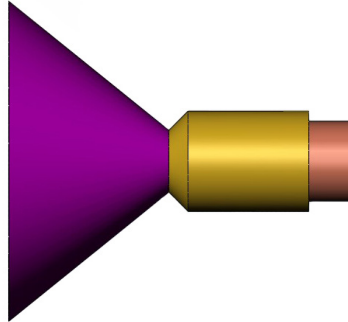
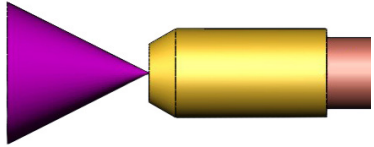


SPRAY NOZZLES

Spray Patterns



SC (Solid Cone):

- Great for spraying a wide variety of surfaces
- Great for thick grease and oil


FC (Fine Cone):

- Great for spraying oil or thick grease
- Great for applications where uniform coverage is critical

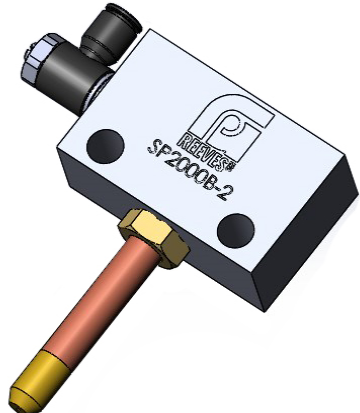
EM (External Mix):

- Works great for oil
- Not for use with grease
- Great for applications where a large surface area needs to be covered
- Atomizes the material being sprayed

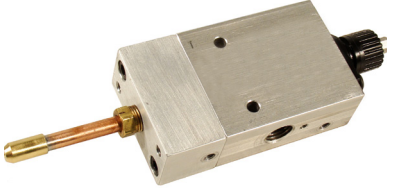
SP1002 & SP1004 Series Nozzles

PART NUMBER	MATERIAL PORTS	AIR INLET PORT	AVAILABLE SPRAY PATTERNS XX=	X=LENGTH IN INCHES	MOUNTING STYLE	
SP1002-XX-X	1/8" tube compression	1/8" tube barb	SC, EM, FC	2"-24"	Bulkhead fitting	
SP1004-XX-X	1/4" tube compression	1/8" tube barb				

SP2000 Series Nozzles / Mounting Blocks

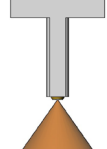
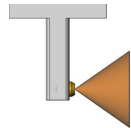
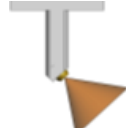
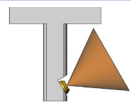
PART NUMBER	MATERIAL PORTS	AIR INLET PORT	X=LENGTH IN INCHES	
SP2000-SC-X	Plug in to SP2000B Series Block	Thru Block	2"-6"	
SP2000B-2 (mounting block)	1/8" NPT Female	1/8" NPT (includes flow control for 1/4" tubing)	NA	
SP2000B-4 (mounting block)	1/4" NPT Female	1/8" NPT (includes flow control for 1/4" tubing)		
GSS-050 (mounting block)	Mounts directly to two GSS dispensers to one spray outlet	10-32 Spray air port		
GSS-055 (mounting block)	Mounts directly onto GSS or GSSM	10-32 Spray air port		

GSS Series Nozzles / Mounting Blocks

PART NUMBER	MATERIAL PORTS	AIR INLET PORT	AVAILABLE SPRAY PATTERNS	X=LENGTH IN INCHES	
GSS-009	10-32	10-32	SC ONLY	2.00 ONLY	
GSS-068-SC-X	Plug In to GSS-019		SC, EM, FC	2"-24"	
GSS-019 (Mounting Block)	Mounts directly to GSS or GSSM		NA	NA	

SP4100 Series Nozzles / Mounting Blocks

IDEAL FOR HARD TO REACH PLACES | AVAILABLE IN A VARIETY OF ANGLES | ONLY AVAILABLE IN 1.5" AND 3" LONG

PART NUMBER	MATERIAL PORTS	AIR INLET PORT	AVAILABLE SPRAY PATTERNS	SPRAY ANGLE
SP4100FC-S-1.5 SP4100FC-S-3.0 SP4100SC-S-1.5 SP4100SC-S-3.0	Connects to SP4100B Series Mounting Blocks	Thru Block	FC, SC	
SP4100FC-90-1.5 SP4100FC-90-3.0			FC ONLY	
SP4100FC-45-1.5 SP4100FC-45-3.0				
SP4100FC-120-1.5 SP4100FC-120-3.0				
SP4100B-2-2 (Mounting Block)				1/8" NPT Female
SP4100B-4-4 (Mounting Block)	1/4" NPT Female	1/4" NPT (includes flow control for 1/4" tubing)		

DV1006

PART NUMBER	MATERIAL PORTS	MATERIAL PRESSURE RATING	DISPENSE VALVE TYPE	REPLACEMENT VALVES	OPTIONS AVAILABLE
DV1006	1/8"	1,500 PSI	Inline	GPR7379	- SPFC-X, X= length in inches (1/2" increments from 1" - 3")