

KA5436 Grease Dispense Valve

RELIABLE

INCLUDES SNUFF-BACK

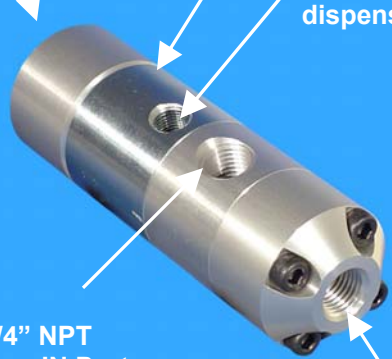
Air-operated single-or double acting dispense valve

- For use with PLC or electronic dispense time controllers
- For use with grease pressure regulator
- For use with flow control or needle valve
- Air Pilot Operated by 3-way or 4-way air valve (50 p.s.i. minimum)
- Snuff-back action prevents oozing
- Operates with maximum grease pressure of 2,500 p.s.i.

1/8" NPT Air Port (not shown) for operation with a 3-way air valve

Additional 1/8" NPT Air Port (not shown) for use with 4-way air valve

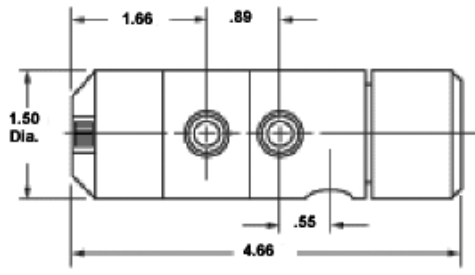
1/8" NPT Port NOT USED when dispensing grease



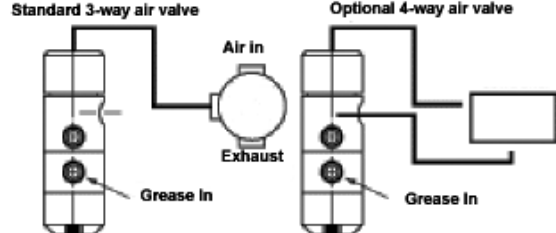
1/4" NPT Grease IN Port

1/4" NPT Grease OUT Port

OUTSIDE DIMENSIONS



OPERATING CIRCUITS



KA5436 GREASE DISPENSE VALVE SPECIFICATIONS			
Material Dispensed	Lubricating oil and grease compatible with Viton seals and with a viscosity between 30 and 1,000,000 centipoise	Construction Materials	Aluminum Body Stainless Steel Spool O-ring are Viton, seats are glass filled Teflon
Ambient Temperature	50 to 120° F. (10 to 49° C.)	Shipping Weight	2 lb.

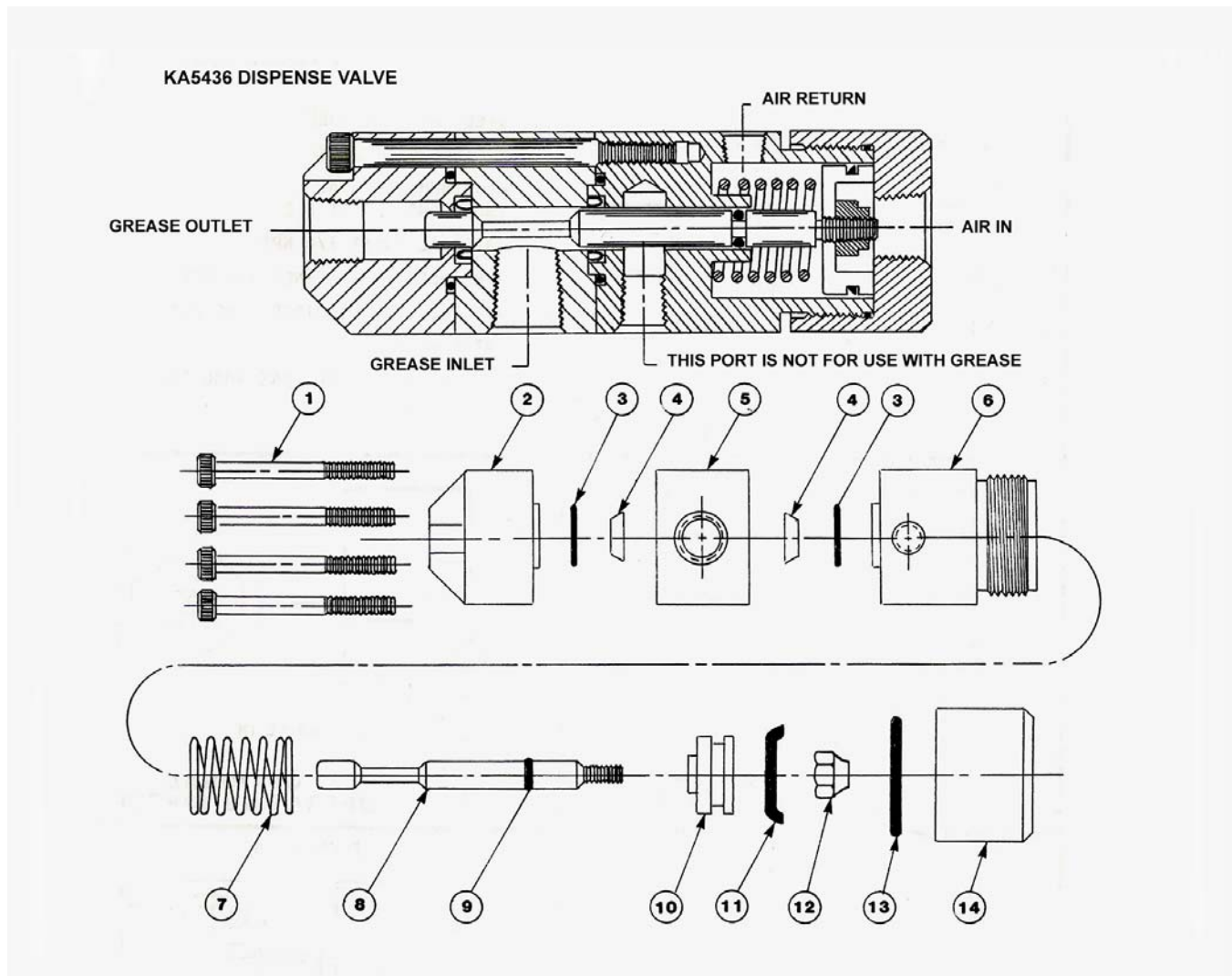
G. P. Reeves Inc. 12764 Greenly Street Holland, MI 49424

Phone: 888.399.8893

Fax: 616.399.8867

Web Site: <http://gpreeves.com>

KA5436 DISPENSE VALVE



Parts Breakdown

No.	Description	Qty.
1	Socket Head Cap Screw	4
2	Grease Outlet Block	1
3	"O" Ring	2
4	Grease Piston Seal	2
5	Material Inlet Block	1
6	Air Cylinder	1
7	Spring	1

No.	Description	Qty.
8	Dispense Valve Spool	1
9	"O" Ring	1
10	Air Piston	1
11	"U" Cup Seal	1
12	Lock Nut	1
13	"O" Ring	1
14	Air Cap	1

REPAIR KITS

Note: Repair Kit 3571.01 is recommended because a non-perfect spool will quickly damage new seals

3570.01	Dispense valve repair kit without spool includes numbers 3, 4, 9, 11, and 13
3571.01	Dispense valve repair kit with spool includes numbers 3, 4, 8, 9, 11, and 13

G. P. Reeves Inc. 12764 Greenly Street Holland, MI 49424

Phone: 888.399.8893

Fax: 616.399.8867

Web Site: <http://gpreeves.com>