

GPMD1000A Automatic Grease Dispenser

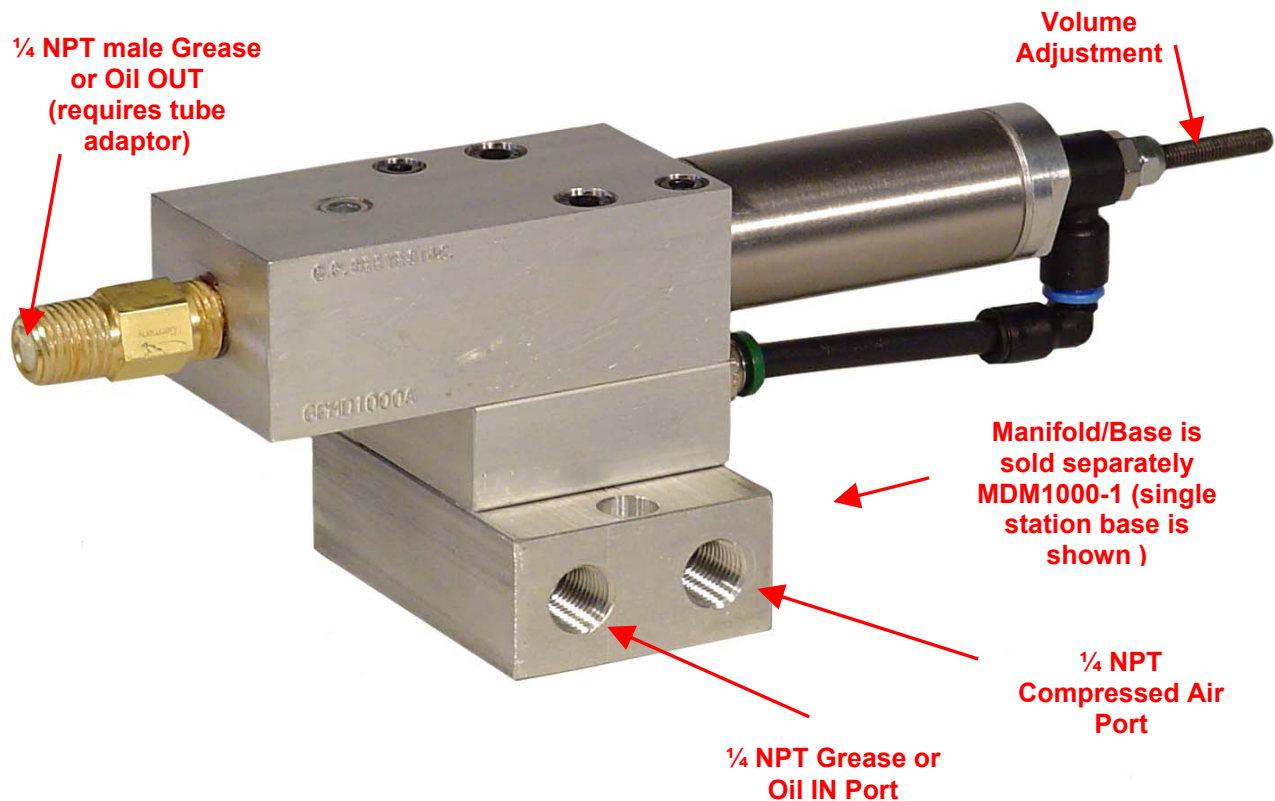
RELIABLE

SIMPLE

CLEAN

Air-operated single-acting metered shot dispenser

- Accurate repetitive dispensing of .066 to 1.25 cubic centimeter shots
- Dispenses up to 40 shots per minute at maximum shot size
- Dispenses up to 120 shots per minute at minimum shot size
- Change shot size quickly and easily
- Functions with up to NLGI #2 grease
- Output check valve prevents dripping
- Installs on standard measuring dispenser base
- Operates with low pressure grease



GPMD1000A

G. P. Reeves Inc. 12764 Greenly Street Holland, MI 49424

Phone: 888.399.8893

Fax: 616.399.8867

Web Site: <http://gpreeves.com>

RELIABLE AND SIMPLE

The GPMD1000A grease dispenser uses a positive displacement air-operated pump, two check valves, and a simple stroke adjustment mechanism to accurately deliver measured shots of grease or oil.

CLEAN AND ECONOMICAL

The GPMD1000A will function with low-pressure oil or grease. Grease is a combination of oil, thickeners, and solids and when grease is under high pressure, the oil can separate and drip and run. The thickeners and solids left behind will be more viscous than the grease. An advantage of dispensing grease at low pressures is reduced separation.

MANIFOLD / BASE MOUNTABLE

The GPMD1000A grease dispensers can be installed on G. P. Reeves MD series measuring dispenser manifolds or bases and can be installed or replaced without disturbing the grease or air supply plumbing. One GPMD can be installed on each manifold or base station. The GPMD1000A grease dispensers can replace smaller volume grease dispensers such as the KA1453, KA1453N and similar dispensers with brass bodies. The 1.25 cc maximum output volume of the GPMD1000A grease dispenser is 19 times that of the KA1453 or KA1453N measuring dispenser.

GPMD1000A SPECIFICATIONS

Material Dispensed	Lubricating oil and grease compatible with neoprene seals and with a viscosity between 30 and 1,000,000 centipoise	Adjustment Mechanism	Includes locking nut and has twenty complete revolutions between maximum and minimum
Shot Volume	.004 to .0767 cubic inch (.066 to 1.25 cc)	Material Inlet Pressure	200 p.s.i. maximum 40 p.s.i. minimum
Boost Ratio	9 to 1, - 50 p.s.i. air pressure = 450 p.s.i. material output pressure	Material Inlet Port	Designed for G. P. Reeves MD manifold or base
Air Valve Size and Function	3-way normally closed with 1/8 or 1/4 NPT ports	Compressed air inlet port	Designed for G. P. Reeves MD manifold or base
Minimum air pressure	40 p.s.i.	Material Outlet Port	1/4 NPT male (see tube adaptor options)
Ambient Temperature	50 to 120° F.	Dimensions	See Drawing KA4659C
Manifold or Base	Any G. P. Reeves MDM1000 series	Shipping Weight	3 lb. (1.36 Kg.)

OPTIONS

Manifold / Base	These are available with from one to eight stations and for simultaneous or independent measuring dispenser operation. Consult factory for more details.
3/16" OD tube adaptor	Part number KA4663
1/4" OD tube adaptor	Part number KA4664
5/32" (4mm) OD tube adaptor	Part number KA5856

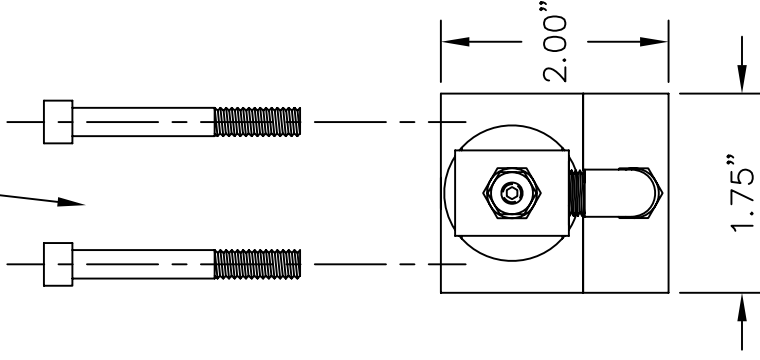
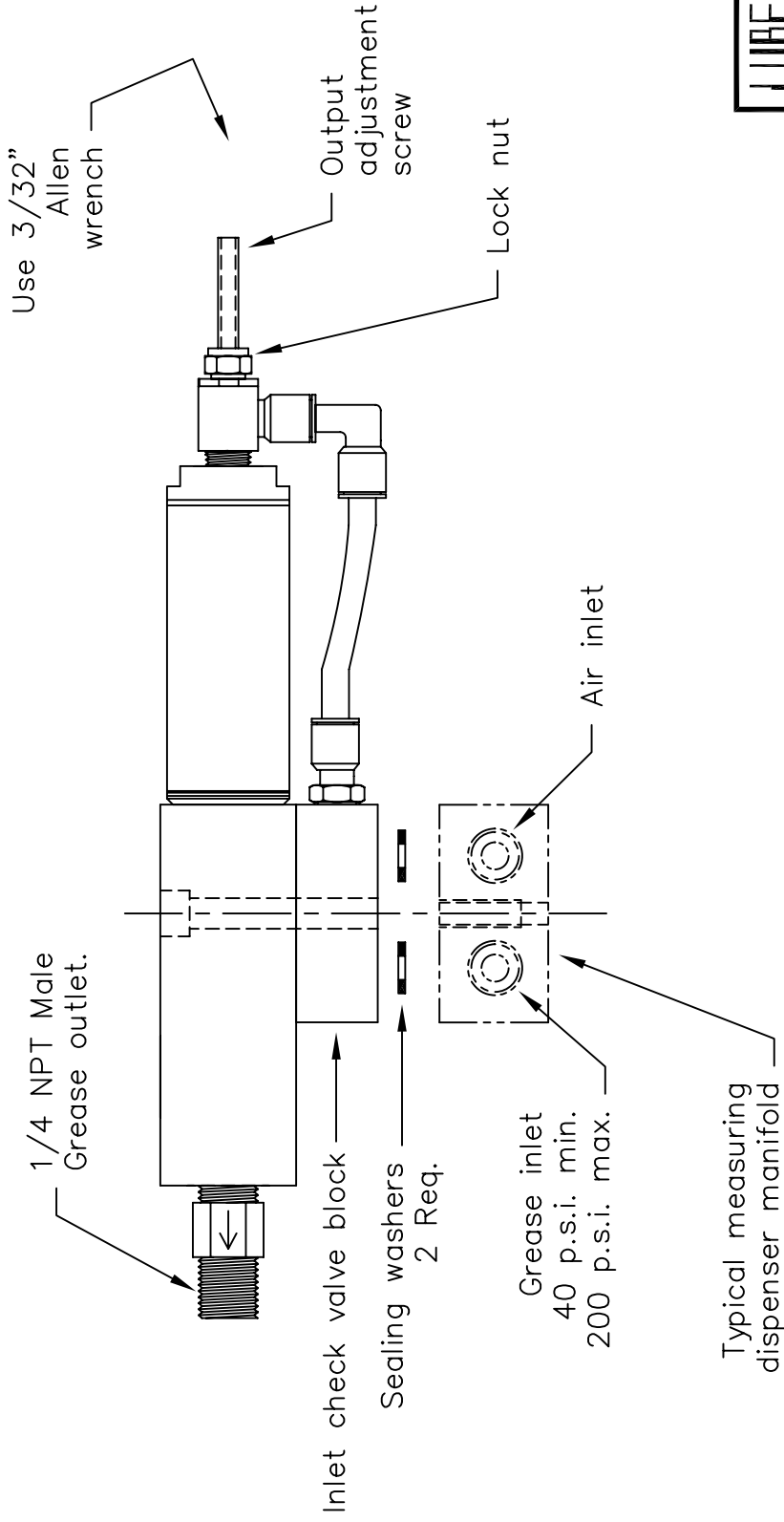
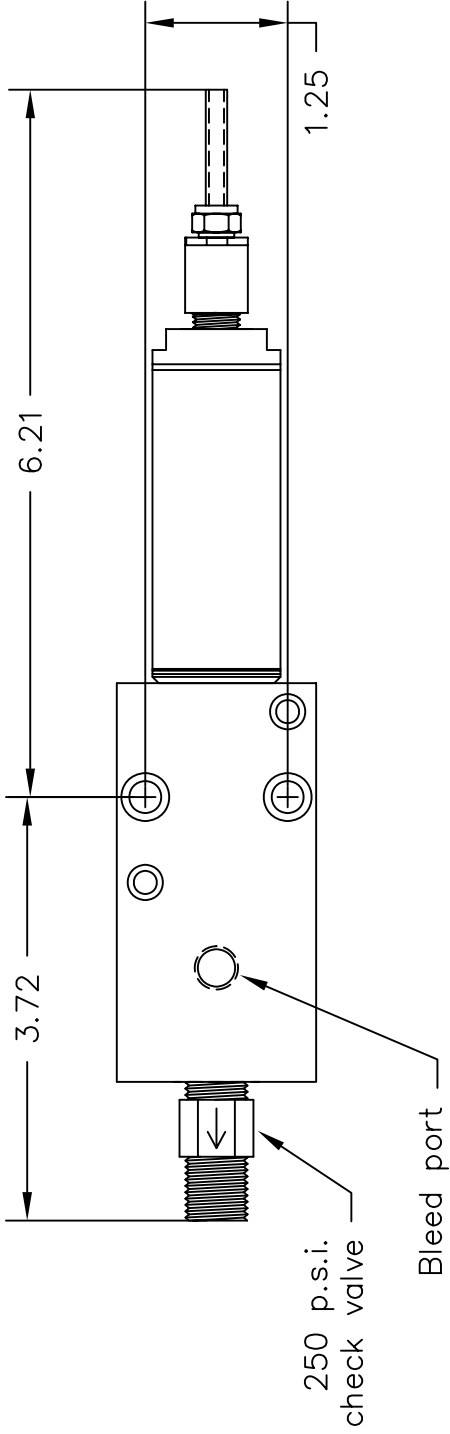
G. P. Reeves Inc. 12764 Greenly Street Holland, MI 49424

Phone: 888.399.8893

Fax: 616.399.8867

Web Site: <http://gpreeves.com>

#1742
1/4-20 x 2 SHCS
2 Req.



LUBE LOGIC G. P. REEVES INC.
 12764 GREENLY STREET, USA
 HOLLAND, MI 49424

SCALE	—		TOLERANCES	X.XXX = ± 0.005	DRAWN BY	KPR
DATE	9/18/07		X.XX = ± 0.015			
			X.X = ± 1/32			

GPMD1000A Grease Dispenser