

**LUBE LOGIC**®

Serving industry since 1971



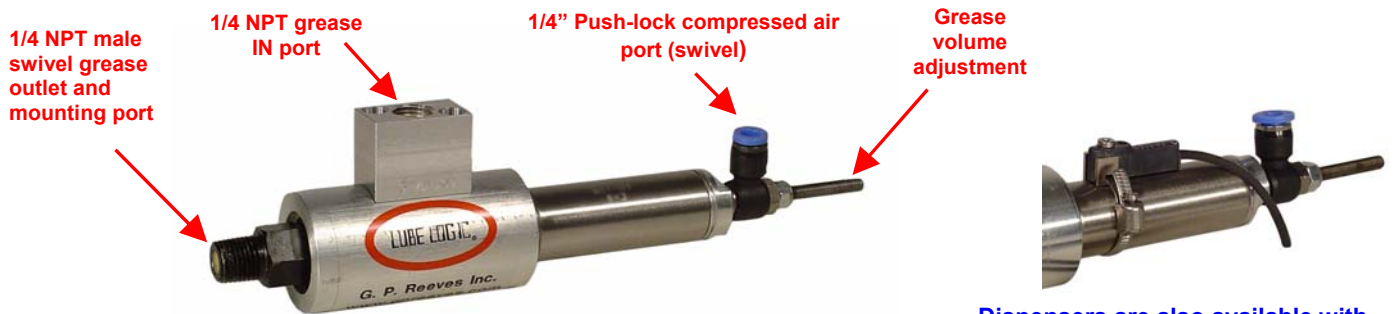
**G. P. Reeves Inc.**  
12764 Greenly Street  
Holland, MI 49424 USA

Phone: 888.399.8893  
Fax: 616.399.8867  
Web Site: <http://gpreeves.com>

# GPMD1500 SERIES GREASE DISPENSERS

Nose-mountable, air-operated, single-acting, adjustable, metered shot (piston) dispenser

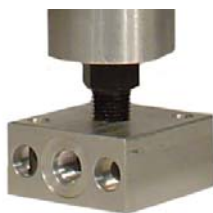
- Accurate repetitive dispensing of 0.02 to 3.69 cubic centimeter shots, depending on model
- Change shot size quickly and easily using fine-thread adjustment screw with lock nut
- Compressed air inlet is 1/4" tube push-lock
- Eliminate oozing or dripping problems by putting the dispenser at the dispense point
- Can be used with EPS1001 electronic pressure sensor to confirm that that grease was dispensed or with stroke sensor (magnetic piston required) to confirm dispenser function
- Operate with 3 way NC Air Valve
- Compact design allows installation at the dispense point or nozzle
- Nose mounted - needs no special manifold or base - can be mounted onto any 1/4 NPT female port
- Output check valve prevents dripping or leaking
- Swivel grease outlet allows inlet port to point in any direction and also facilitates easy installation
- Uses a positive displacement air-operated piston pump, two check valves, and a simple stroke adjustment mechanism to accurately deliver measured shots of grease
- Operates with low pressure grease (up to 200 p.s.i.)



Photos below show some of the available options

Dispensers are also available with electronic stroke sensors  
Contact factory for part numbers

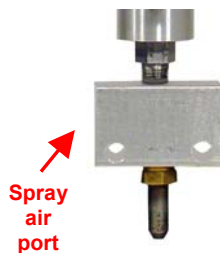
**KA6003 Mounting block**



**Pressure sensor on mounting block**



**Spray Nozzle**



**Propelled Droplet Nozzle**



**Extrusion nozzle on mounting block**



THREE SIZES ARE AVAILABLE

**GPMD1508**

Grease amounts from 0.02 cc to 0.80 cc



**GPMD1500**

Grease amounts from 0.06 cc to 1.25 cc



**GPMD1505**

Grease amounts from 0.13 cc to 3.69 cc

