

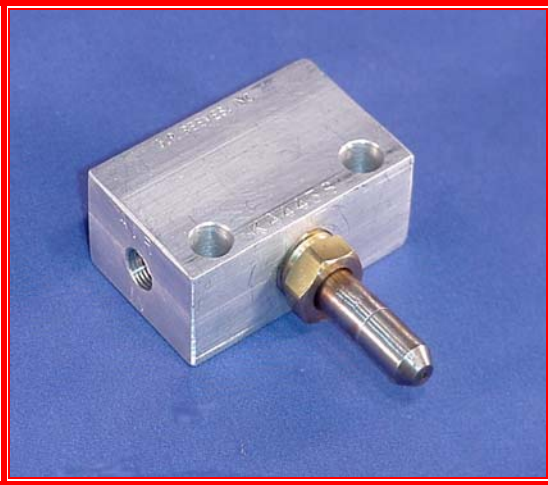
KA4438

BLOCK TYPE GREASE SPRAY NOZZLE

Heavy Duty Spray Nozzle

- Operates with grease at low or high pressure
- Replaceable plug in spray tip
- Will spray grease up to 12 inches
- Functions with almost any grease or oil up to NLGI #2
- 1/8 NPT air and grease ports
- Available with custom tips

**KA4438 Nozzle Asm. Includes
KA4437 Tip**



Specifications

See attached drawing for dimensions

Air Pressure	60 to 150 p.s.i.
Grease Pressure	150 to 2000 p.s.i
Spray Pattern	Solid cone
Grease Volume	10 cc per second max.
Replacement Tip	KA4437

**OPTIONAL TIPS
(see drawings for details)**

KA2325A has straight tip

KA2325-XX has straight tip, specify length in inches

KA3421 has 90 deg. bend

KA3426 has 90 deg. bend

KA3427 has 90 deg. bend

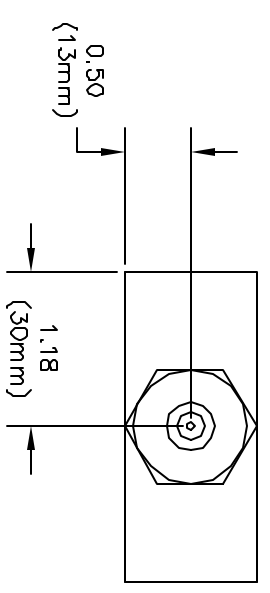
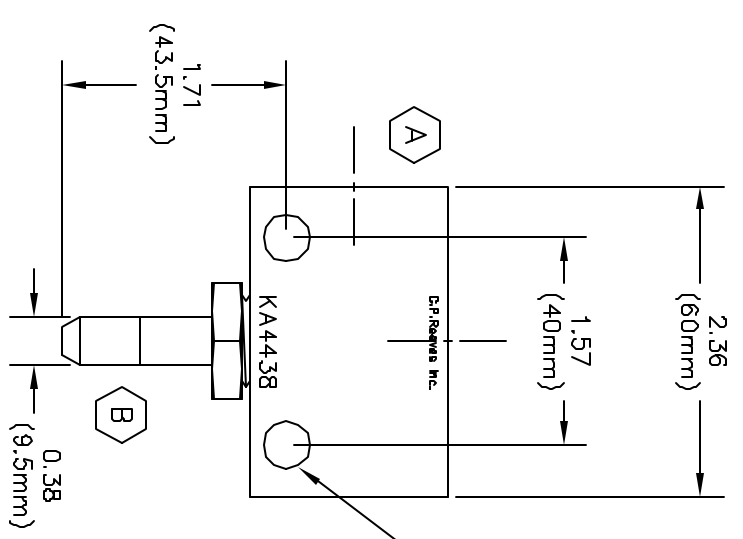
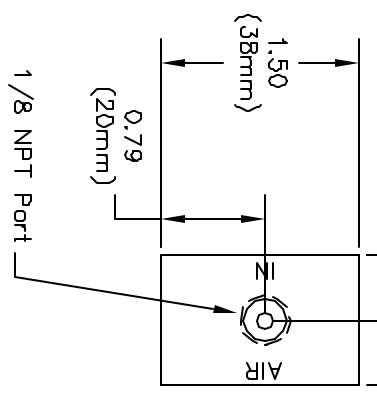
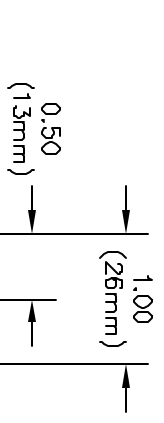
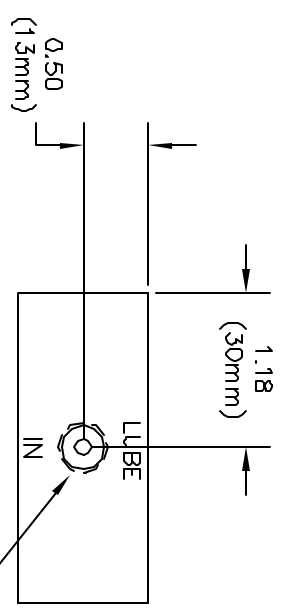
KA3489 has 90 deg. bend

KA3488 has 90 deg. bend

KA4088 has 90 deg. bend

KA4089 has 90 deg. bend

G. P. Reeves Inc. **12764 Greenly Street** **Holland, MI 49424**
 Phone: 888.399.8893 Fax: 616.399.8867 Web Site: <http://gpreeves.com>



THIS DOCUMENT IS THE PROPERTY OF G.P. REEVES INC. AND CONTAINS CONFIDENTIAL PROPRIETARY INFORMATION THAT IS NOT TO BE DISCLOSED TO THIRD PARTIES AND IS NOT TO BE USED WITHOUT APPROVAL IN WRITING FROM G.P. REEVES INC.

KEY	DESCRIPTION	REQ
B	KA4437 Nozzle, Coaxial Spray, Plug-In Type	1
A	KA4439 Nozzle Block	1

LUBE LOGIC		G. P. REEVES INC.	
SCALE: -		TOLERANCES: XXXX ± 0.003 BROWNI VR	
DATE: 02/26/01		DATE: 02/26/01	
DRAWING NUMBER: KA44-38		DRAWING NUMBER: KA44-38	

NOZZLE, BLOCK TYPE SPRAY

SHEET 1 of 2 DRAWING NUMBER KA44-38